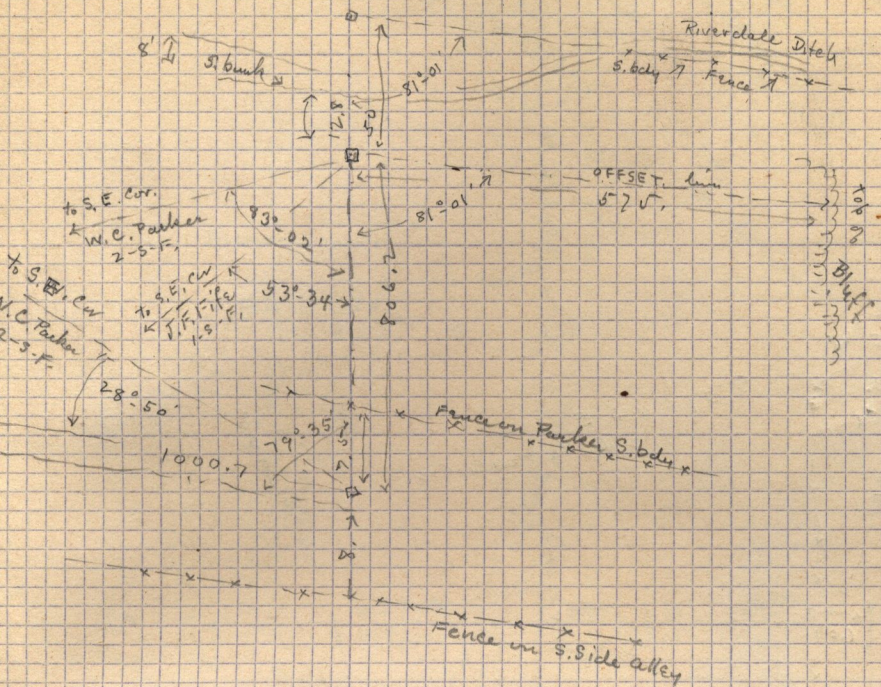


This survey to be connected with Lawn Dale Addition



Feb. 8 - 1911 - Surveyed Lots 49-50-138 - Rushton Add. for
 Geo. G. Sawyer -
 (See Field Book I - p. 27) Geo. E. assisted

an Iron Harrow tooth set out each of 4 corners.
 on N. Side 22nd East of Jackson Ave.

make examination of Plk 25 - Huntsville Survey for A. J. Shupe